



BT Vision Powerline Adapters

Model number: HP200PT64BT2

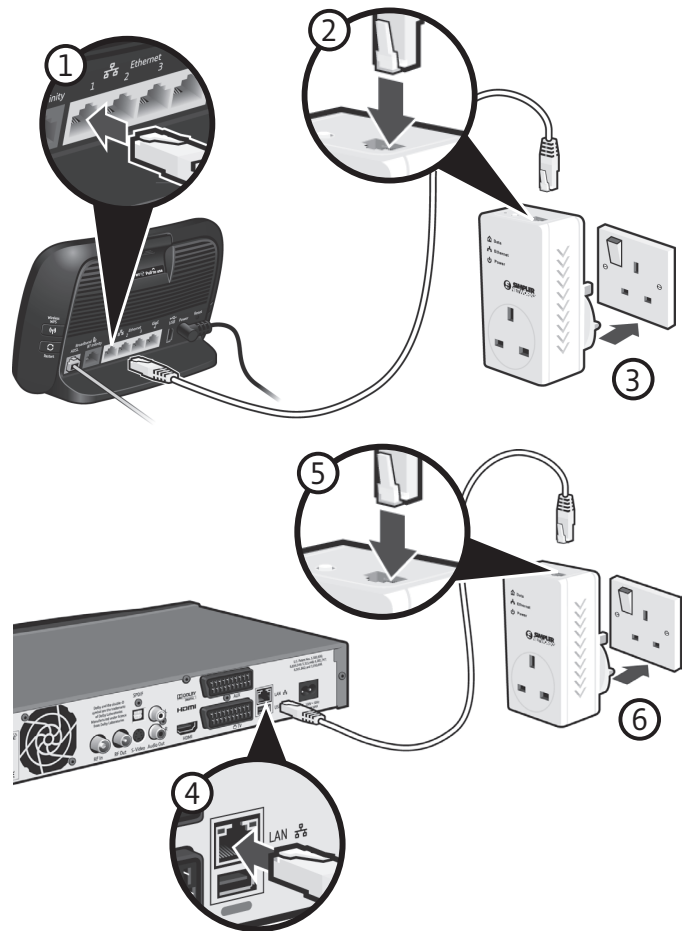
What's in the box

Power Adapters x2, Ethernet cable, Quick start guide

Connecting your Powerlines

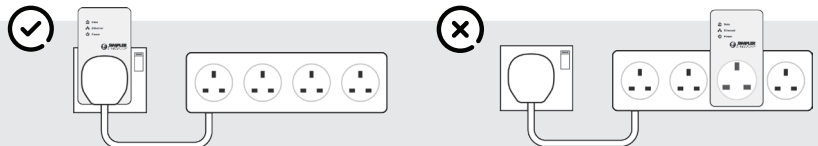
If your BT Home Hub is in another room or is more than two metres away from your Vision+ box you'll need to use your Powerline adapters

- 1 Using the Ethernet cable (yellow ends), connect one end to your Hub's Ethernet port 1
- 2 Connect the other end to a Powerline adapter
- 3 Then plug the Powerline adapter directly into a power socket and turn it on
- 4 Using the Ethernet cable provided with your Vision+ box, connect one end to the LAN socket at the back of your Vision+ box
- 5 Connect the other end to a Powerline adapter
- 6 Then plug the Powerline adapter directly into a power socket and turn it on. When you've plugged in both your Powerline adapters, their Data lights should glow green



NOTE: your Powerline adapters will work with any version of the BT Home Hub and Vision+ box, not just the ones shown in the diagram

IMPORTANT: to work properly Powerline adapters must be plugged directly into the wall socket and not into extension leads



LED status description

GREEN: Powerline network is detected with high transfer speed

ORANGE: Powerline network is detected with medium transfer speed

RED: Powerline network is detected with low transfer speed

FLASHING: Any of the above flashing - a data transfer in progress

OFF: No Powerline connection

GREEN STEADY: Ethernet connection is detected

GREEN FLASHING: Ethernet traffic is detected

GREEN STEADY: Power is on

GREEN FLASHING: the unit is in pairing mode, see overleaf

OFF: the mains power is off or the unit is in sleep mode.

The unit automatically wakes up from sleep mode when the device connected to the Ethernet cable is powered up.



Data



Ethernet



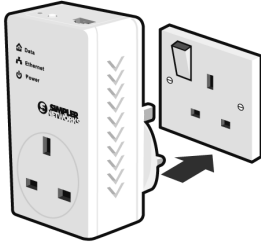
Power

How to connect additional Powerline adapters to your network

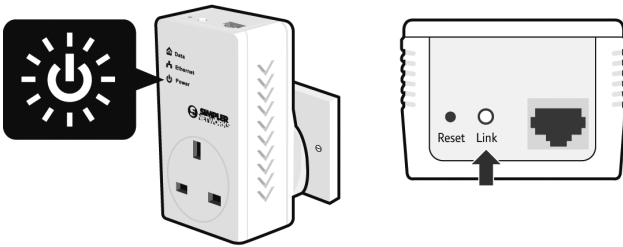
You can expand your home network by connecting new Powerlines of the same make and model to your existing pair.

TIP: You might find it easier to plug your new Powerline and one of your existing ones into the same double power socket while you carry out the connection process

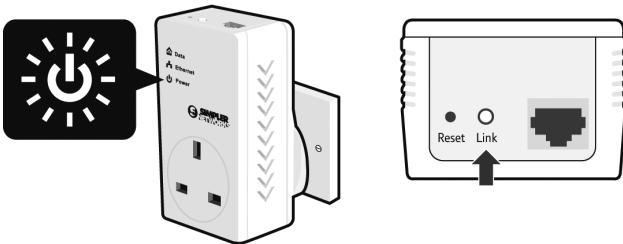
- 1 Plug in your new Powerline and turn on power



- 2 On your new Powerline, press and hold the Link button until the lights go out (around 15 seconds). When the lights come on again, wait for the Power light to stop flashing

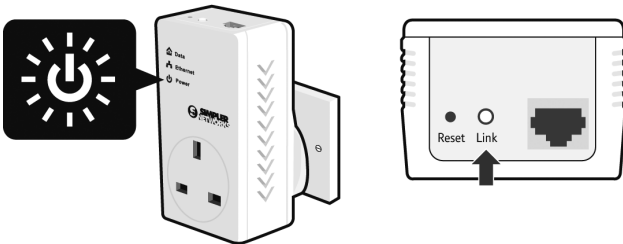


- 3 On one of your existing Powerlines (it doesn't matter which one), press the Link button for 2 seconds then release it and the power icon will start flashing



Unit 1 or 2

- 4 On your new Powerline unit, press the Link button for 2 seconds then release it and the power icon will start flashing



Unit 3

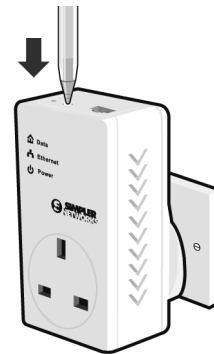
- 5 When the power light on both Powerlines has stopped flashing, your new Powerline will be connected to the network

IMPORTANT: your Powerline adapters work on the HomePlug AV standard. If there are any other Powerlines plugged in that are not HomePlug AV compatible, they will stop your Powerlines working properly

Reset to factory settings

If your Powerline adapters stop working or become unpaired, a reset to factory settings will put them back into their original condition:

- 1 Make sure the Powerline adapter is plugged in and switched on
- 2 Using a pointed object (like a pen), press the Reset button for 2 seconds. The lights will go out and the adapter will reset



- 3 Repeat steps 1 and 2 for the other adapter

Need more help?

Get more help online at www.bt.com/help/powerline

Also see our set up videos: www.bt.com/help/powerlinevideo

Declaration of conformance

This product is intended for use in the UK. The Declaration of Conformance can be found at www.bt.com/help/btvision

Product disposal instructions for residential users

The Waste of Electrical and Electronic Equipment (WEEE) Directive (2002/96/EC) has been put in place to recycle products using best available recovery and recycling techniques to minimise the impact on the environment, treat any hazardous substances and avoid the increasing landfill. The symbol shown above and on the product means that the product is classed as Electrical Equipment and you should not put it into your domestic waste bin. When you've no more use for it, please dispose of the product according to your local authority's recycling scheme. For more information, please contact your local authority or the retailer where you bought the product.



Offices worldwide

The services described in this publication are subject to availability and may be modified from time to time. Services and equipment are supplied subject to British Telecommunications plc's respective standard conditions of contract. Nothing in this publication forms any part of a contract.

© British Telecommunications plc. 2012
Registered office: 81 Newgate Street, London EC1A 7AJ
Registered in England No 1800000