

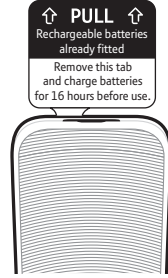
Your BT3950 is now ready to use.

ⓘ If you need to remove the batteries, slide open the battery compartment cover and using the finger hole, grip the batteries and gently pull them out.

- ### Set up your additional handsets (if you've bought a multipack)
- 1 For each additional handset and charger: plug the mains power adaptor into the socket on the underside of the charger, secure the cable behind the retaining clip and plug the other end into the wall power socket and switch on.
 - 2 Activate the batteries as shown above. Then place the handset on the charger to charge for 16 hours.

ⓘ **Important:** you should charge the batteries for 16 hours before using the handset for the first time.

- 1 Activate the batteries by pulling the plastic tab away from the bottom of the handset.
- 2 The handset will check for a link with the base station. Once found, follow the prompt to set the date and time.
- 3 Place the handset on the base to charge the batteries for 16 hours.

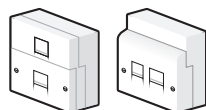
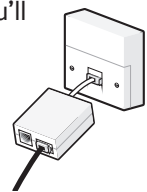


2 Charge

Troubleshooting

Most problems can be fixed with a few simple checks.

Problem	Solution
No dial tone	Only use the cables supplied. Make sure the telephone line cord is plugged in correctly.
You have a dial tone, but the phone will not dial out	If you are connected to a switchboard, check whether you need to dial an access code or if you need to change the dial mode.
Handset not charging	Make sure the handset is turned on before placing on the base or charger to charge.
Phone ringer does not ring	Is the ringer volume switch set to 0? Move the ringer switch to 1 or 2.
Using broadband on the same phone line?	To avoid problems with your broadband or noise on your phone line, you might need to plug your telephone line cord into the wall via a microfilter (not supplied). If your main phone socket has a single socket, as shown, you'll need to use microfilters. You don't need to use microfilters if your main phone socket has two separate sockets, like either of these:



General information

For information on safety instructions, cleaning, technical information or connecting to a switchboard, please refer to the 'General information' section in the full user guide at bt.com/producthelp

Guarantee

Your BT3950 is guaranteed for a period of 12 months from the date of purchase.

Subject to the terms listed below, the guarantee will provide for the repair of, or at BT's or its agent's discretion the option to replace the BT3950, or any component thereof, (other than batteries), which is identified as faulty or below standard, or as a result of inferior workmanship or materials. Products over 28 days old from the date of purchase may be replaced with a refurbished or repaired product.

The conditions of this guarantee are:

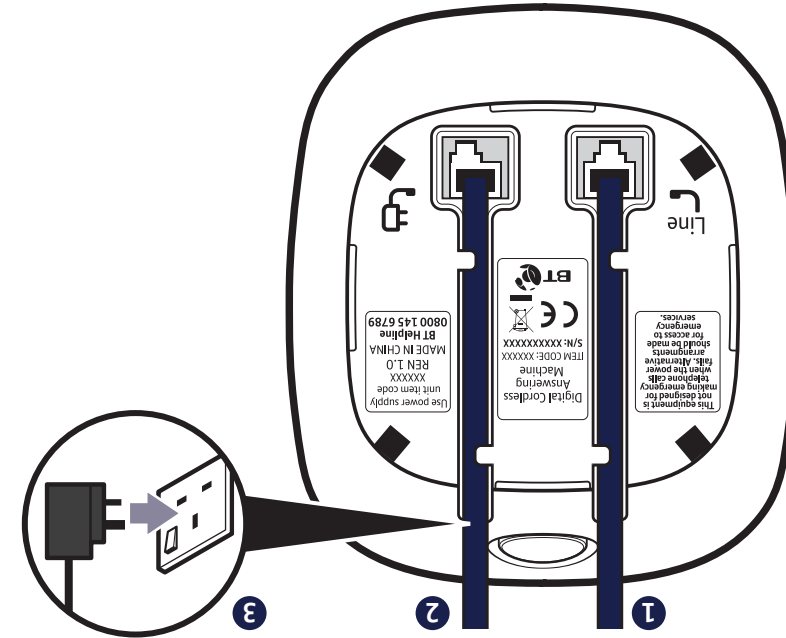
- The guarantee shall only apply to defects that occur within the 12 month guarantee period.
- Proof of purchase is required.
- The equipment is returned to BT or its agent as instructed.

This guarantee does not cover any faults or defects caused by accidents, misuse, fair wear and tear, neglect, tampering with the equipment, or any attempt at adjustment or repair other than through approved agents.

This guarantee does not affect your statutory rights.

To find out what to do, if your phone is in or outside of the 12 month guarantee, please look in the full user guide at bt.com/producthelp

© British Telecommunications plc 2017.
Registered Office: 81 Newgate Street, London EC1A 7AJ. Registered in England No. 1800000
Designed and produced by The Art & Design Partnership (ADP). Printed in China / Issue 2 / ADP05-17



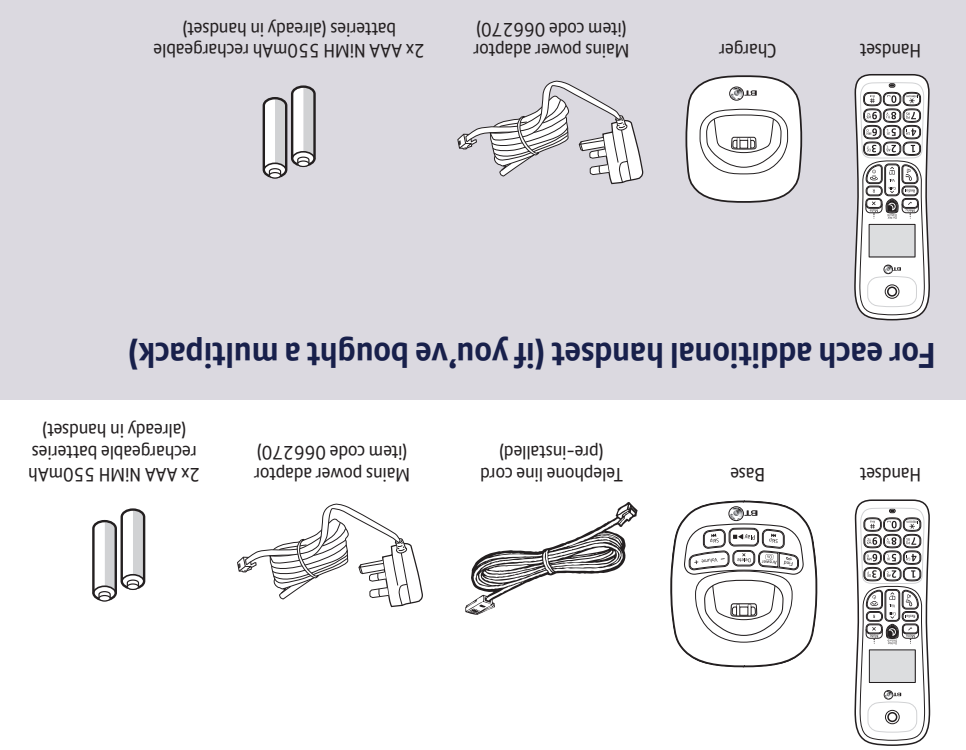
1 Plug in

- 1 The telephone line cord is already fitted, plug the other end into the wall socket.
- 2 Plug the mains power adaptor into the base, with the cable clipped in the groove provided.
- 3 Plug the other end of the power adaptor into the wall power socket and switch on.

BT3950

Digital Cordless Phone with Answer Machine

ⓘ **Important:** Only use the mains power adaptors, cables and rechargeable batteries supplied in this box, or this product may not work. Any replacement rechargeable batteries must be the same type. BT accepts no responsibility for damage caused to your phone by using any other type of batteries.



What's in the box



3 Using your phone

You'll need Caller Display
To get the most from your nuisance call blocker phone and for all the features to work, you'll need to subscribe to a Caller Display service from your network provider. Charges may apply.

Making and receiving calls

- Make and end a call**
Press green then dial the phone number. Press red to end the call.
- Answer a call**
Lift handset from base or charger. If handset not on base or charger you'll need to press green .
- Mute**
Press during a call. Press to return to your caller.

View or dial a number in Calls list†

- The Calls list stores details of the last 50 incoming calls.
- Press , then . Press or to scroll through the list.
 - Press to dial the number.

Nuisance Call Blocking†

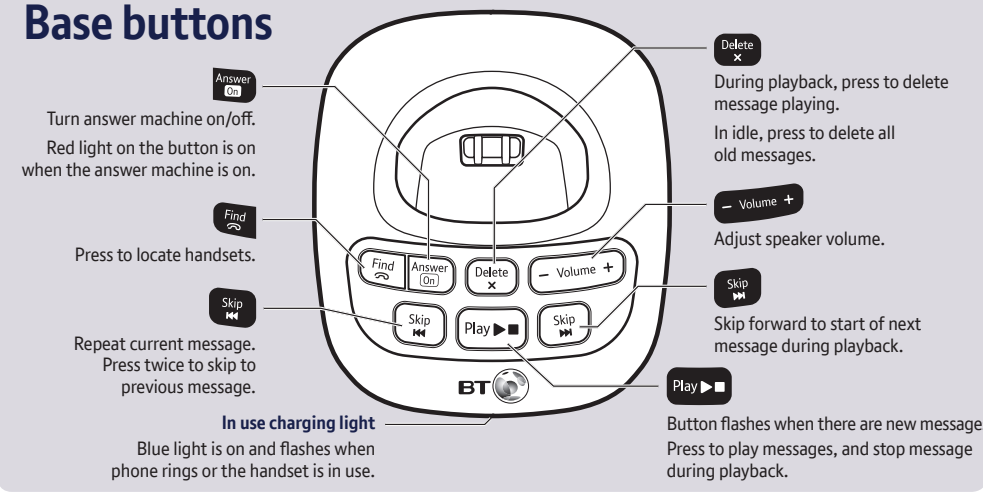
- Turn call blocking on to enable block list**
 - Press , scroll down to **Call Block** and press again.
 - Scroll to **By Number** and press . Then scroll to **Block Mode** and press again.
 - Scroll to **On** and press .
- Block an incoming call number in your Call list**
 - Press to enter the Call List. Then scroll to the entry you want to block and press .
 - Scroll down to **Call Block**, press .
 - Screen will show the number that will be blocked. Press and number will be blocked.

Phonebook

- Store entry in phonebook (up to 50)**
 - Press , then press again. Scroll to **New Entry**, press .
 - Enter name using keypad and press .
 - Enter phone number and press to save.
 - Add to VIP?** is displayed. Press if you want to add to your VIP list. **Saved!** is displayed.
- To save a number to your phonebook from the Calls list, press , then . Scroll to the number and press . **Save Number** is displayed, press . Enter name and press . Edit the number if required, press to save.

- Dial entry in phonebook**
 - From the home screen, press .
 - Scroll or to display the entry and press to dial.

Handset buttons and display icons



Answer machine

- Your answer machine is on and ready to record messages. You can control it using the buttons on the base (see above) or using the handset **Answ Machine** menu.
- Record your own outgoing message**
 - Press . Press to display **Answ Machine**, press .
 - Scroll to **Answer Mode**, press .
 - Scroll or to display **Record also** or **Answer only** and press . **Personalized** is displayed, press .
 - Scroll to display **Record** and press . **Recording** is displayed and you'll hear a beep. Speak your message, then press to end recording.
 - Set the answer delay**
For compatibility with BT1571 or another voicemail service make sure the answer delay is set to answer before the service, e.g. for BT1571 do not set to more than 5 rings.
 - Press . Press to display **Answ Machine**, press .
 - Scroll to **Answ Setting** and press . **Ring delay** is displayed, press .
 - Scroll or to display the number of rings you want (0-9) or **Time saver** and press .

Using the menu

- Press to open the main menu, scroll through using or . When the menu you want is displayed, press . Press or to scroll through the sub menus and press to select.
- and buttons let you select options displayed above the buttons on the display.
- Use to exit a menu or go back.
- If no buttons are pressed for 30 seconds the handset will return to the idle screen.

Handset volume and sounds

- Incoming speech volume**
During a call, press or to increase or decrease the volume of your caller's voice.
- Handset ringer volume**
 - Press , scroll to **Personal Set**, press .
 - Handset Tone** is displayed, press .
 - Ring Volume** is displayed, press .
 - Scroll or to adjust the volume, press to save.
- Handset ringtone**
 - Press , scroll to **Personal Set**, press .
 - Handset Tone** is displayed, press .
 - Scroll to **Ring Melody**, press .
 - Press or to hear ringtones, press to save.

Using the keypad

- When entering letters you may need to press the same button a few times until the letter you want is displayed, e.g. press **2^{AB}** once for **A**, twice for **B**, three times for **C**.
- To enter a space, press **0[☐]**.
- To toggle between upper and lowercase characters, press **#^{ABC}**.

Need some help?

Frequently asked questions and a full user guide are available online.
bt.com/producthelp

If you cannot find the answer to your question in the full online user guide, call our free Helpline. Our dedicated advisors are more likely to be able to help you than the retailer where you bought your phone.

0800 145 6789*

This user guide is also available in other formats: large print, Braille and audio CD. Call the helpline for a copy.

* Calls made from within the UK mainland network are free. Mobile and international call costs may vary. † Requires a subscription to a Caller Display service from your network provider. Charges may apply.